

Papershift GmbH

60 Employees

Founded in 2012

Location: Karlsruhe, Germany



“When building organizations and companies, the most sophisticated task is to recruit, manage and develop employees.

This is why we’ve created Papershift – a platform that helps you manage all those people management processes. “

Michael Emaschow
Papershift CEO

Today: over

200,000

Users

Over
2,000
Organizations

Loved by more than **200,000** users

30 Mio planned shifts per year | 2000 active organisations | 5 Mio actions per month



Our Products

Employee scheduling

Time tracking

Realtime analytics

HR management

Cloud based HR Management

Employee scheduling, time tracking, analytics and hr management

Plan

Employee scheduling
Absences planning
Availability planning
Forecasts

Track

Time tracking via iPad
Law restrictions
Business restrictions
Real time notifications

Analyze

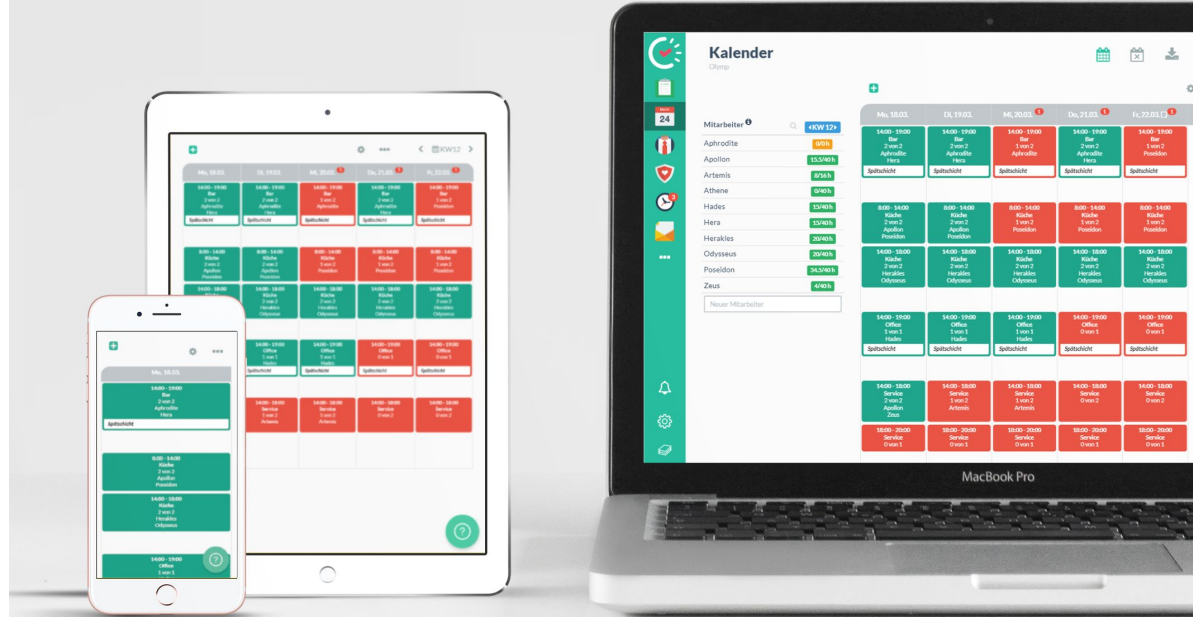
Costs Forecast
Actual vs planned
Target numbers
Revenues vs costs

Manage

Employee data
Payroll preparation
Custom Reports
Files and docs
On/Offboarding

Cloud based Employee Scheduling

Schedule employees based on availabilities, target hours, law restrictions, revenue data, and more.



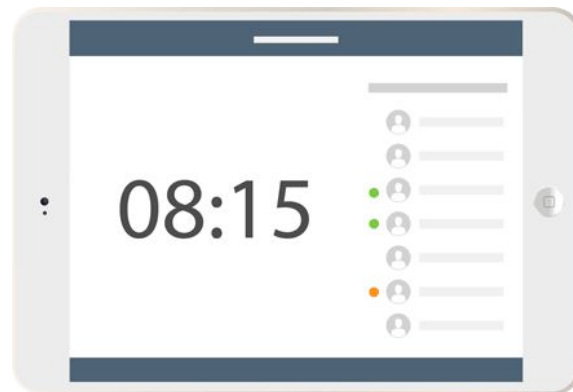
Plan shifts with contextual data

Schedule employees based on availabilities, target hours, law restrictions, revenue data, and more.

- Build your schedule based on intraday revenue data and historical data
- Automatically get notified if your schedule breaks law restrictions
- Consider availabilities, target hours and contract data for every employee automatically
- Let employees request absences and free days
- Enable shift-trades for employees
- Consider target KPIs (planned costs) when scheduling
- Choose from more than 15 possible view options
- Schedule from everywhere on every device

Tablet based Time Tracking Solution

Track employee attendances and consider legal and business restrictions automatically



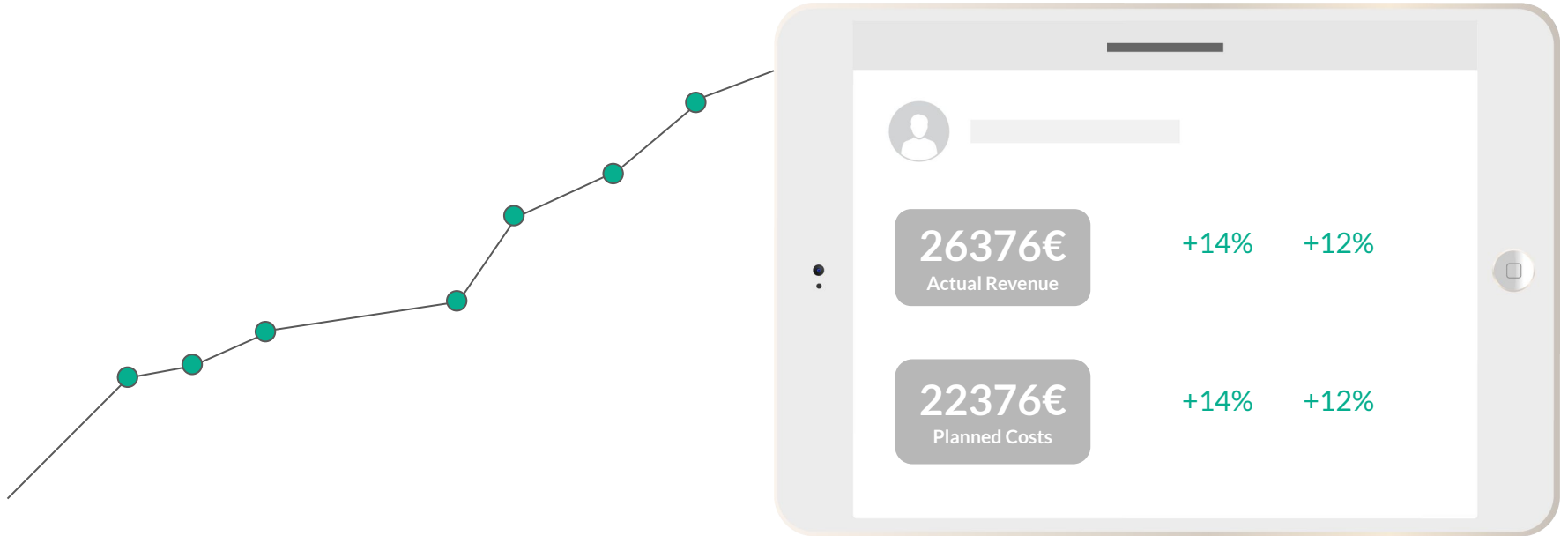
Time Tracking with predefined rules

Track employee attendances and consider law- and business restrictions automatically

- Let employees sign every attendance with a signature
- Define business rules such as: No clocking in before planned time (based on scheduled hours)
- Define law restrictions like rest periods and mandatory break times
- Get notified when defined rules get broken
- Allow change requests
- Add notes to every time tracking item

Realtime Analytics

Show KPIs in realtime. Integrate data from register and define data-based workflows.



Let data help you manage your business

Sync Revenue Data in realtime, Calc personal costs in real time, define workflows based on data.

- Integrate revenue data via public API
- Calc personal costs including surcharges for night or weekend shifts
- Define workflows based on data. For example: sending employee home, when actual revenue is 20% less than expected.
- Define custom reports to benchmark different locations
- Schedule reports via pdf for your daily routine
- Communicate targets with store managers based on charts
- Let store managers know if they reach the target

HR Management with all required data

Manage all your employee data in one place. Define data-based workflows and notifications.



Warning

Employee contract ends this month on April 17th

Warning

Employee has 34 overtime hours

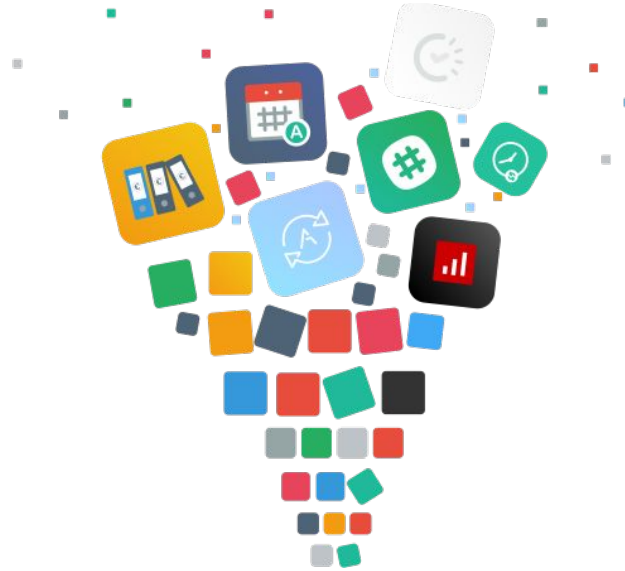
Manage employee data and automate workflows

Manage employee data, onboard- and offboard employees, define workflows, get notified.

- Manage all employee data in one place
- Manage files and documents
- Define warning and notifications based on employee data (Workflows)
- Manage onboarding- and offboarding workflows
- Create custom employee reports
- Search employees by any attribute
- Prepare payroll automatically based on available data like timetrackings
- Enable employee self service for contact information of employee and downloading historical payrolls.

Integrate with several third party services

With our API we can integrate with almost any modern third party app.





Empowering organizations by simplifying time management